


Instructions



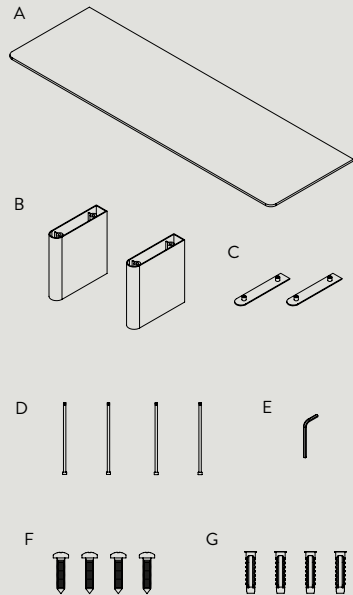
Column JA2
John Astbury
2019

Congratulations with your new Column shelf, designed in 2019 by John Astbury. We hope you will enjoy using this product and follow these instructions to ensure correct installation. If you have any questions or comments, please do not hesitate to contact us by mail on:

info@andtradition.com

Column JA2 John Astbury 2019

Please read these instructions carefully and retain them for future reference to ensure that the product is used correctly. For your own safety, please study each step of this instruction manual first. &Tradition is not responsible for any faults or damages caused by not following these instructions correctly. Do not modify this product in any way.



Contents

- A Shelf
- B Columns x 2
- C Bottom cover x 2
- D Screws x 4
- E Allen Key
- F Screws x 4
- G Plugs x 4

Tools needed

- Spirit level
- Pencil
- Electric drill
- Screwdriver

Safety precautions

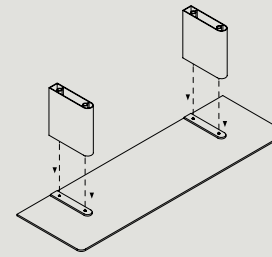
- Dispose of any plastic bags and foam from packaging and do not allow children to play with it.
- The product is only intended for interior use.
- Handle the product with care in order not to scratch the surface.
- Spilled liquids of any kind should be removed immediately as it may penetrate the surface treatment and cause damage to it.

Cleaning instructions

The product is made of aluminium.

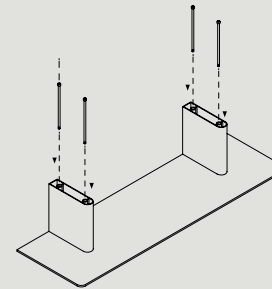
- Never use aggressive or abrasive cleaning detergents for any parts of the shelf, as this will cause irreparable damage.
- Clean the shelf and base with a soft cloth wrung in a solution of water and universal cleaning detergent and dry immediately with a soft cloth. Avoid use of abrasive cleaning products such as steel wool or polish.

Maximum load: 10kg



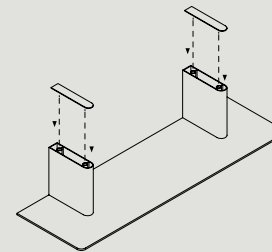
Step 1

Carefully place the shelf on a soft flat surface. Place the two columns as illustrated and align the holes in the shelf with the holes in the columns.



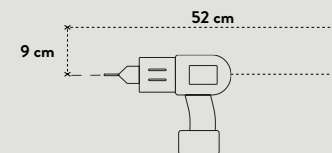
Step 2

Screw in the four screws with the Allen Key and tighten slightly.



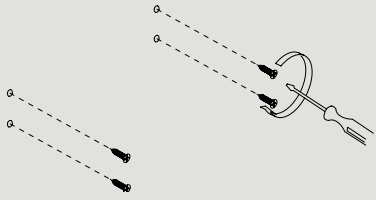
Step 3

Place the bottom covers at the bottom of the columns with the magnets facing downwards. The magnets will now hold the bottom covers when properly installed.



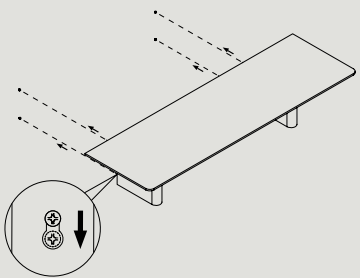
Step 4

Using a spirit level, mark the placement of the 4 back side holes of the column on the wall. Drill holes at the marks and insert the attached plugs. Please note that the plugs are universal and recommended for brick and concrete walls.



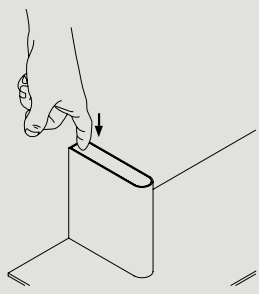
Step 5

Align the screws with the plugs and mount by fasten the screws with the screwdriver. Make sure to keep 4 - 5 mm of space between the wall and the screwhead.



Step 6

Place the columns on the screws and pull it down carefully for fastening.



Disassemble the shelf

To disassemble the shelf, remove the bottom cover by pushing firmly at the end of the bottom cover.