

NEU10

By HAY



HAY

Neu's ergonomically moulded shell combined with its cast swivel base results in a perfectly defined profile. The durable, finely-grained plastic adds textural interest, while the rim detail gives the design structure and character. In the upholstered version a delicate stitching line runs across the seat and the piping detail accentuates the chair's raised rim. Its functional and comfortable construction and flexible design options makes it the perfect choice for offices or dining rooms.

NEU10



New Order & Neu10 / Bordeaux & Cream white

HAY

NEU10



Neu10 / Bordeaux



New Order & Neu10

HAY

NEU10 UPHOLSTERY



Neu10 upholstery / Rime 621 / Black base

HAY

NEU10 UPHOLSTERY



Neu10 upholstery / Steelcut 975 / Green base

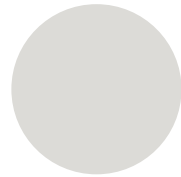


Neu10 upholstery / Steelcut 655 / Bordeaux base

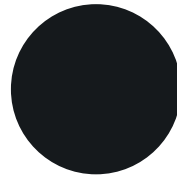
HAY

MATERIAL & COLOUR OVERVIEW

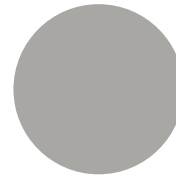
SHELL / BASE



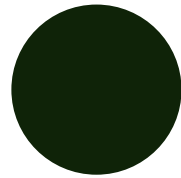
Cream white



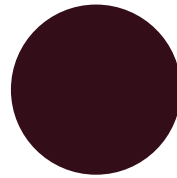
Soft black



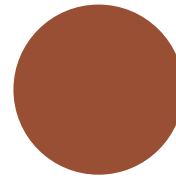
Mud grey



Green



Bordeaux



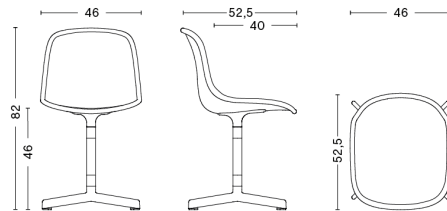
Orange

Fabrics Steelcut Trio, Steelcut, Remix, Surface by HAY, Divina, Divina Melange, Divina MD, Hallingdal, Compound, Canvas, Coda, Tonus Meadow, Tonus, Rime, Harald, Forest Nap, Fiord, Sunniva, Balder, Hero
Leathers California, Sierra, Silk

HAY

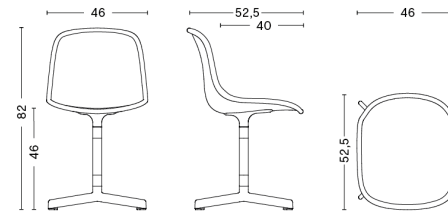
NEU10

NEU10



Material Injection moulded
polypropylene shell, cast aluminium
swivel base / with standard glider
Optional felt gliders
Dimensions W46 x D52,5 x H46/82 cm
Seat depth 40 cm

NEU10 UPHOLSTERY



Material Injection moulded
polypropylene shell, cast aluminium swivel
base, 10 mm foam / with standard glider
Optional felt gliders
Dimensions W46 x D52,5 x H46/82 cm
Seat depth 40 cm

HAY

NEU10

Download pictures [here](#)

Username: hay

Password: design

HAY / Havnen 1, 8700 Horsens, Denmark

www.hay.dk

HAY