

m o o o i<sup>®</sup>



## Set Up Shades

Exploring the boundaries within type-forms Marcel Wanders presents the 'Set Up Shades' for this intriguing collection.

<b>Designer</b>	Marcel Wanders
<b>Year of design</b>	1989
<b>Material</b>	PVC/cotton laminate on a metal structure

# m o o o i<sup>®</sup>

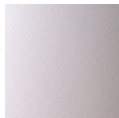
## Detailing



The Set up shades diffuses a gradient of light beautifully from top to bottom.

Please refer to the manual for more information

## Colour



White

## Technical

### Set up shade 5



E14 x I  
40 W MAX type A



Cable length 2M (transparent)  
Europlug



E12 x I  
40 W MAX type A  
Cable length 2M (black)  
US 2-pin plug

### Set up shade 6



E27 x I  
60 W MAX type A



Cable length 2,5M (transparent)  
Europlug



E26 x I  
60 W MAX type A  
Cable length 2,5M (black)  
US 2-pin plug

### Set up shade 7



E27 x I  
60 W MAX type A



Cable length 2,5M (transparent)  
Europlug



E26 x I  
60 W MAX type A  
Cable length 2,5M (black)  
US 2-pin plug

## Packaging

### Set up shade 5

H 74 cm | 29.1"  
W 25 cm | 9.8"  
D 25 cm | 9.8"

Colli 1/1

Product weight:  
1,2 KG | 2,6 lb  
With packaging:  
1,7 KG | 3,5 lb

### Set up shade 6

H 130 cm | 51.2"  
W 34 cm | 13.4"  
D 34 cm | 13.4"

Colli 1/1

Product weight:  
2 KG | 4,4 lb  
With packaging:  
4 KG | 8,8 lb

### Set up shade 7

H 187 cm | 73.6"  
W 43 cm | 16.9"  
D 43 cm | 16.9"

Colli 1/1

Product weight:  
3,7 KG | 8,1 lb  
With packaging:  
7,5 KG | 16,5 lb

## Cleaning Instructions

Moooi recommends cleaning the Set up shades regularly with a dry cloth or feather duster to prevent a build up of dust. For more stubborn stains use a familiar stain remover that does not contain bleach. Please ensure the lamp is not connected to a mains electrical supply whilst cleaning is in progress.

# m o o o i<sup>®</sup>

## Main dimensions

